



# T-Series Climate Changer™ Gas Heat Module

- CW/DX applied outdoor air handlers
- Factory-packaged gas heat
- Industrial-quality components

Heavy-duty 14-gauge 409 stainless steel drum-and-tube heat exchanger with flame viewing window, cleanout panel and condensate drain

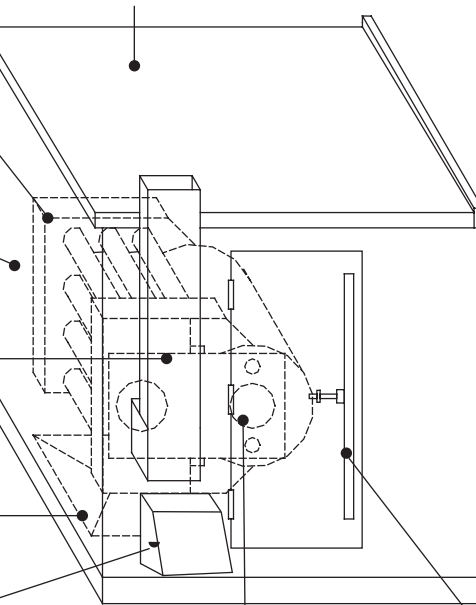
Factory-tested and UL-listed

Stainless steel flue stack ships loose for field installation

Front or bottom discharge

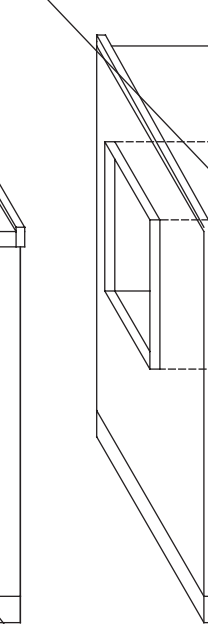
Combustion hoods or bottom opening

Blow-thru only



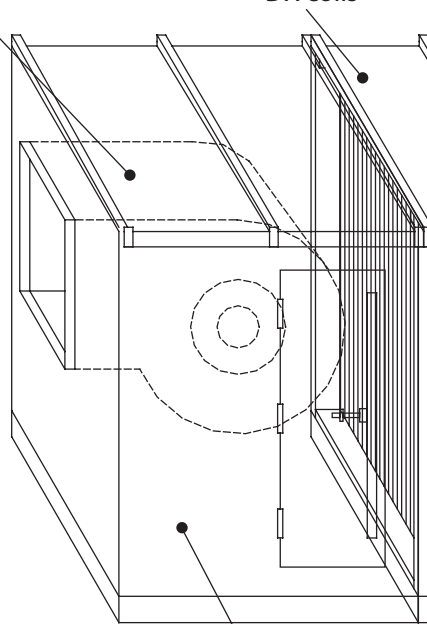
High-quality full-modulating 200-2000 MBh output forced-draft burners with 3:1 or 10:1 turndown ratio; 1250-2500 MBh output forced draft burners with 20:1 turndown ratio; natural gas and propane

Two fan types: FC and AF



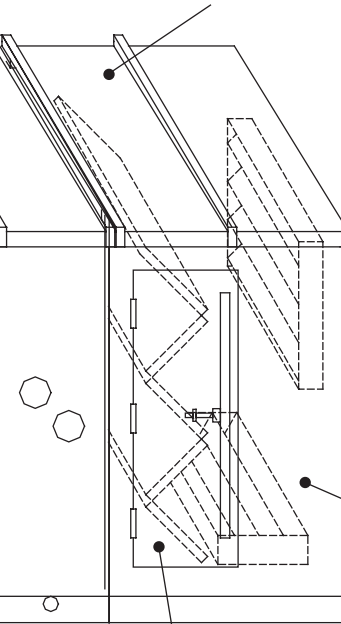
Gas train and burner vestibule with access door

Chilled-water and DX coils



Factory-mounted starters, VFDs and temperature controls

Over 40 flexible connecting modules (e.g. mixing, filters, blenders, etc.)



Double-wall construction

Complete UL listed air-handling units



# T-Series Climate Changer™ Gas Heat Quick Select™

Unit Size	6	8	10	12	14	17	21	25	30	35	40	50	66	80	100
Nominal CFM	3000	4000	5000	6000	7000	8500	10500	12500	15000	17500	20000	25000	33000	40000	50000
Minimum CFM	2250	3000	3750	4500	5250	6375	7875	9375	11250	13125	15000	18750	24750	30000	37500
<b>MBh Output</b>	<b>200</b>	<b>200</b>	<b>200</b>	<b>200</b>	<b>200</b>	<b>200</b>	<b>200</b>								
Temperature Rise	61 / 81	45 / 61	36 / 48	30 / 40	26 / 35	21 / 29	17 / 23								
Piping Vestibule	External	External	Internal	Internal	Internal	Internal	Internal								
Section Length	54.5	53	58.5	58.5	58.5	58.5	49.5								
Section Weight	1030	1032	1056	1075	1088	1116	1077								
<b>MBh Output</b>	<b>300</b>	<b>300</b>													
Temperature Rise	91 / 101	68 / 91													
Piping Vestibule	External	External													
Section Length	70	73													
Section Weight	1115	1145													
<b>MBh Output</b>			<b>360</b>	<b>360</b>	<b>360</b>	<b>360</b>	<b>360</b>	<b>360</b>	<b>360</b>	<b>360</b>					
Temperature Rise			65 / 87	55 / 73	47 / 62	39 / 51	31 / 42	26 / 35	22 / 29	19 / 25					
Piping Vestibule			External	External	External	External	External	External	Internal	Internal					
Section Length			68	68	68	68	68	64.5	64.5	64					
Section Weight			1338	1361	1377	1410	1491	1489	1428	1491					
<b>MBh Output</b>				<b>560</b>	<b>560</b>	<b>560</b>	<b>560</b>	<b>560</b>	<b>560</b>	<b>560</b>	<b>560</b>	<b>560</b>			
Temperature Rise				85 / 101	73 / 97	60 / 80	48 / 65	41 / 54	34 / 45	29 / 39	25 / 34	20 / 27			
Piping Vestibule				External	External	External	External	External	Internal	Internal	Internal	Internal			
Section Length				68	68	68	68	64.5	64.5	64	64	62.5			
Section Weight				1376	1392	1425	1506	1504	1443	1506	1557	1657			
<b>MBh Output</b>						<b>700</b>	<b>700</b>	<b>700</b>	<b>700</b>	<b>700</b>	<b>700</b>	<b>700</b>	<b>700</b>		
Temperature Rise						75 / 100	61 / 81	51 / 68	42 / 57	36 / 48	32 / 42	25 / 34	19 / 26		
Piping Vestibule						External	External	External	Internal	Internal	Internal	Internal	Internal		
Section Length						79	79	71	71	71	71	67	68		
Section Weight						1630	1721	1667	1608	1717	1774	1825	1943		
<b>MBh Output</b>							<b>860</b>	<b>860</b>	<b>860</b>	<b>860</b>	<b>860</b>	<b>860</b>	<b>860</b>	<b>860</b>	
Temperature Rise							74 / 99	63 / 83	52 / 69	45 / 60	39 / 52	31 / 42	24 / 32	20 / 26	
Piping Vestibule							External	External	Internal	Internal	Internal	Internal	Internal	Internal	
Section Length							83.5	75.5	75.5	75.5	75.5	77	78.5	73	
Section Weight							2001	1974	1921	2006	2066	2248	2358	2323	
<b>MBh Output</b>							<b>1000</b>	<b>1000</b>	<b>1000</b>	<b>1000</b>	<b>1000</b>	<b>1000</b>	<b>1000</b>	<b>1000</b>	<b>1000</b>
Temperature Rise							87 / 101	73 / 97	61 / 81	52 / 69	45 / 61	36 / 48	28 / 37	23 / 30	18 / 24
Piping Vestibule							External	External	External	Internal	Internal	Internal	Internal	Internal	Internal
Section Length							92.5	80	80	80	75.5	77	78.5	73	74.5
Section Weight							2433	2351	2401	2390	2411	2593	2703	2668	2796
<b>MBh Output</b>										<b>1250</b>	<b>1250</b>	<b>1250</b>	<b>1250</b>	<b>1250</b>	<b>1250</b>
Temperature Rise										65 / 87	57 / 76	45 / 61	34 / 46	28 / 38	23 / 30
Piping Vestibule										External	External	External	Internal	Internal	Internal
Section Length										96	96	96	87	83.5	89.5
Section Weight										2978	3070	3233	3115	3110	3316
<b>MBh Output</b>										<b>1500</b>	<b>1500</b>	<b>1500</b>	<b>1500</b>	<b>1500</b>	<b>1500</b>
Temperature Rise										78 / 101	68 / 91	55 / 73	41 / 55	34 / 45	27 / 36
Piping Vestibule										External	External	External	Internal	Internal	Internal
Section Length										96	96	96	87	83.5	89.5
Section Weight										2978	3070	3233	3115	3110	3316
<b>MBh Output</b>										<b>1750</b>	<b>1750</b>	<b>1750</b>	<b>1750</b>	<b>1750</b>	<b>1750</b>
Temperature Rise										91 / 101	80 / 101	64 / 85	48 / 64	40 / 53	32 / 42
Piping Vestibule										External	External	External	Internal	Internal	Internal
Section Length										96	96	96	87	83.5	89.5
Section Weight										2993	3085	3248	3130	3125	3331
<b>MBh Output</b>												<b>2000</b>	<b>2000</b>	<b>2000</b>	<b>2000</b>
Temperature Rise												73 / 97	55 / 73	45 / 61	36 / 48
Piping Vestibule												External	External	External	Internal
Section Length												110	97.5	98	98
Section Weight												3774	3825	3967	3823
<b>MBh Output</b>													<b>2500</b>	<b>2500</b>	<b>2500</b>
Temperature Rise													69 / 92	57 / 76	45 / 61
Piping Vestibule													External	External	External
Section Length													97.5	98	98
Section Weight													4240	4382	4588

### Gas Heat application rules:

- The maximum allowable temperature rise is as listed in table for minimum cfm.
- Nominal airflow is based on 500 fpm through a nominal coil (i.e. 500 x unit size 8 = 4000 cfm).
- The minimum allowable airflow at full fire is 75 percent of the nominal airflow (i.e. 0.75 x 500 x unit size 8 = 3000 cfm).
- The minimum allowable airflow at reduced fire is 50 percent of the nominal airflow (i.e. 0.50 x 500 x unit size 8 = 2000 cfm).
- Calculate temperature rise at airflows other than nominal with this equation:  
Temp Rise = (1000 x MBh) / (1.1 x CFM)
- Section lengths do not include unit end panels. Refer to Unit quick select (CLCH-PRC005-EN) for unit end panel dimensions.
- On high altitude applications, derate the heating capacity (MBh) by 4 percent for every 1,000 feet of altitude over 2,000 feet above sea level.
- Temperature rise is listed for nominal cfm/minimum cfm.
- 20:1 turndown ratio option is available on unit sizes 35 through 100 with 1250 MBh burner capacity and greater.
- The 2,500 MBh burner option is only available with 20:1 turndown ratio capacity control.